

# Unaðsreiturinn

Kristján Hreinsson

Porvaldur Gylfason  
úts.: Þórir Baldursson

Allegro (♩=90)

A

Í fjör - u mín-ar minn - ing-ar fá

*mf*

*mf*

Detailed description: This system contains the first four measures of the piece. It features a vocal line in bass clef and a piano accompaniment in treble and bass clefs. The tempo is marked Allegro with a quarter note equal to 90 beats per minute. The key signature has one sharp (F#). The first measure of the piano accompaniment is marked *mf*. The vocal line begins with a rest, followed by the lyrics 'Í fjör - u mín-ar minn - ing-ar fá'.

5

mátt sem traust-ur er. Ég skynj-a allt sem áð - ur var, þá ást sem fædd-ist

*p*

Detailed description: This system contains measures 5 through 8. The vocal line continues with the lyrics 'mátt sem traust-ur er. Ég skynj-a allt sem áð - ur var, þá ást sem fædd-ist'. The piano accompaniment continues with chords and moving lines in both hands. The final measure of the piano accompaniment is marked *p*.

10

hér, — pá un-aðs-stund sem á-vöxt bar er einn ég gekk með þér. — Hér

**B**

15

svíf - ur þú um hug - ans heim er hjart - ans takt ég finn og til þín fer mín

*p*

20

sál á sveim er sól - in verm-ir kinn, svo flýg ég upp með fugl-um þeim sem

25

**C**

fegr-a him - in - inn. Í öld - um sé ég eng - il þinn er and - ar haf-ið

*p*

30

blátt, hér bjart-a\_\_ sól og bros ég\_finn í blíðr-i sunn-an átt. Þín

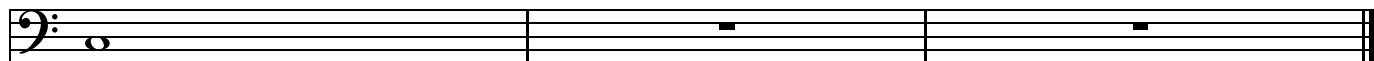
The musical score for measures 30-34 consists of three staves. The top staff is a bass clef line with lyrics underneath. The middle staff is a grand staff with a treble clef on top and a bass clef on the bottom. The bottom staff is a bass clef line. The music is in a key with one sharp (F#) and a 4/4 time signature. The lyrics are: "blátt, hér bjart-a\_\_ sól og bros ég\_finn í blíðr-i sunn-an átt. Þín".

35

hlýj - a seið - ir hug - a minn og hjart - að mitt er

The musical score for measures 35-39 consists of three staves. The top staff is a bass clef line with lyrics underneath. The middle staff is a grand staff with a treble clef on top and a bass clef on the bottom. The bottom staff is a bass clef line. The music is in a key with one sharp (F#) and a 4/4 time signature. The lyrics are: "hlýj - a seið - ir hug - a minn og hjart - að mitt er".

38 rit. . . . .



sátt.

rit. . . . .

